



July 10, 2018

YO !!! CYCLING COMMUNITY!

‘Standard’ Road Signage *specific* for Cycling Safety & Road Sharing **is urgently needed.**

We can accelerate design, campaign use & official adoption if we ‘wiki-crowdsource’ this challenge.

A list of issues to ‘sign’ and search-harvested graphics to inspire, adapt &/or use - follow below.

Please share this challenge. I’m glad to serve as a clearinghouse to get it going.

Michael [Charney](#)
Sign Bike Safety!
DutchReach.org
[dutchreachorg](#) dot [gmail](#)



Hazards & Issues to Sign:

Right Cross / Hook – esp. w trucks.

Left Cross / Hook

T-Bone

Dooring & Door Zone avoidance

Overtaking, Close Pass / Safe Pass

Large Vehicle (LV) Issues:

Blind Angle avoidance

Wide turns

Loading / Unloading, Zones

Garbage, Dump, Cement trucks & Duckboat risks

Intersection positioning

Taking the lane

Distracted biking

Yielding

Countermeasures



Road defects & Reporting:

Potholes, uneven surface, sand & gravel, debris
Grating/Tracks/Expansion joints/ Ruts
Slippery when wet metal plates

New infrastructure explanations:

Buffered Bike Lanes
Protected lanes Bike Boxes
Sharrows
Bike Signals
Roundabouts
Contraflow Bike Lane
Directional paint

Lights & visibility

Way-finding

High Risk Zones

Road Rage - Vulnerability, Compassion

Courtesies

Illegalities



**BIKING IS
THE NEW
DRIVING**



GUIDANCE:

Try to emulate official standards – Pictograms must be simple, quick to grasp.

Applications: Road sign posts, stickers, decals, stenciling on pavement, sides/back of DPW trucks, buses, bumper stickers, swag, curricula, driver's manuals, ...etc.

For more ideas & examples:

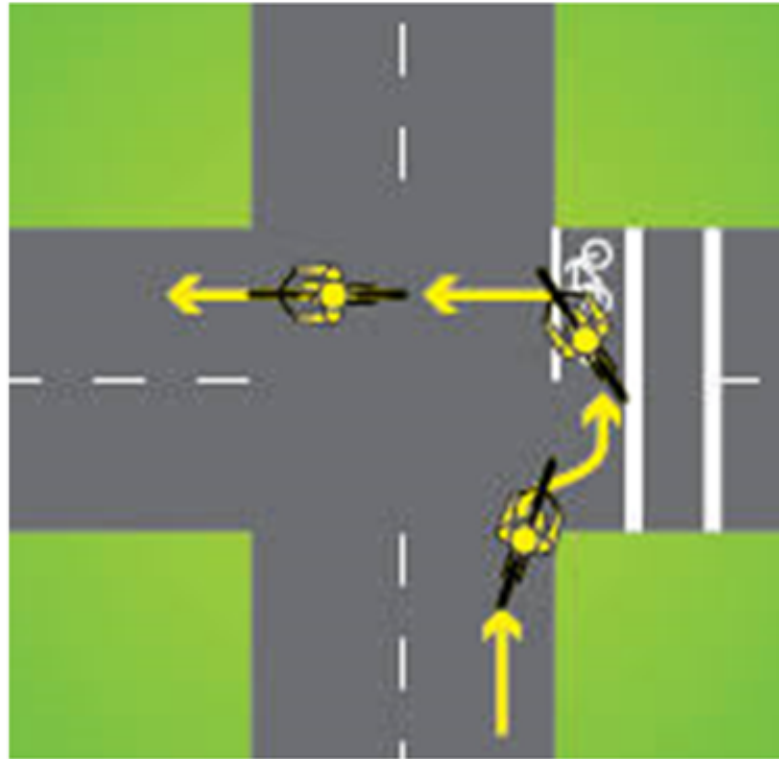
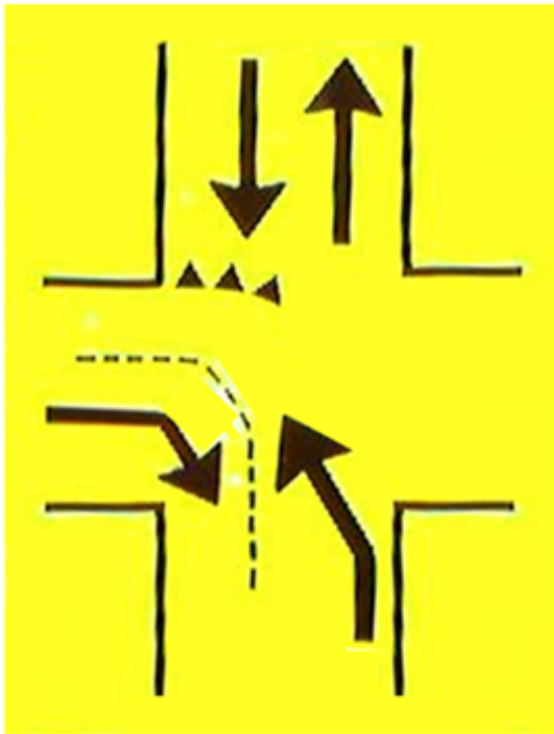
Use SEARCH terms such as: road, road sharing, traffic, caution, bike, safety, warning, signs, graphics, posters, symbols, etc. +/- with type of issue or risk to find more examples.

Consult also: Bike education programs, Bicycle Friendly Driver Program (Fort Collins) manuals, videos etc.

Bicycle Accident Prevention 12 Most Common Types - <http://www.bicycleaccidentprevention.com/>







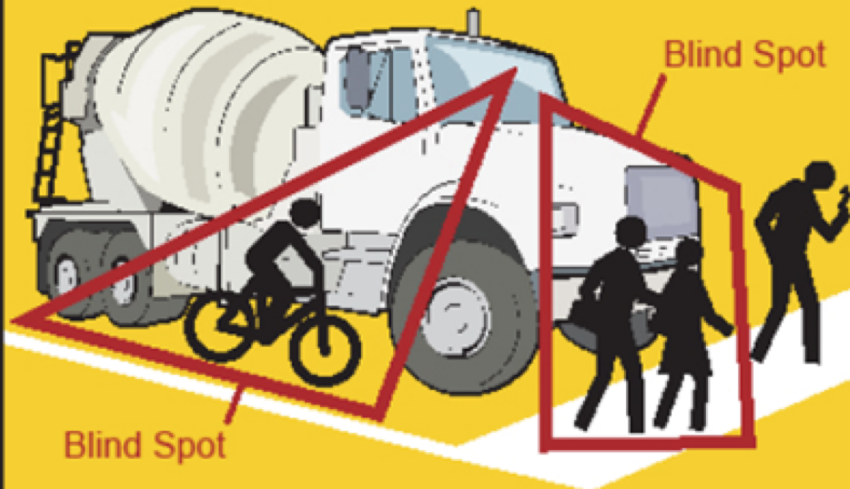
RIGHT TURN



Lock frame & back wheel to parking stand & lock front wheel with cable/second lock



I Can't See You...



...if You Can't See Me

Pass Safely!

When crossing in front of or passing beside a concrete truck stay a safe distance out of the driver's blind spots.

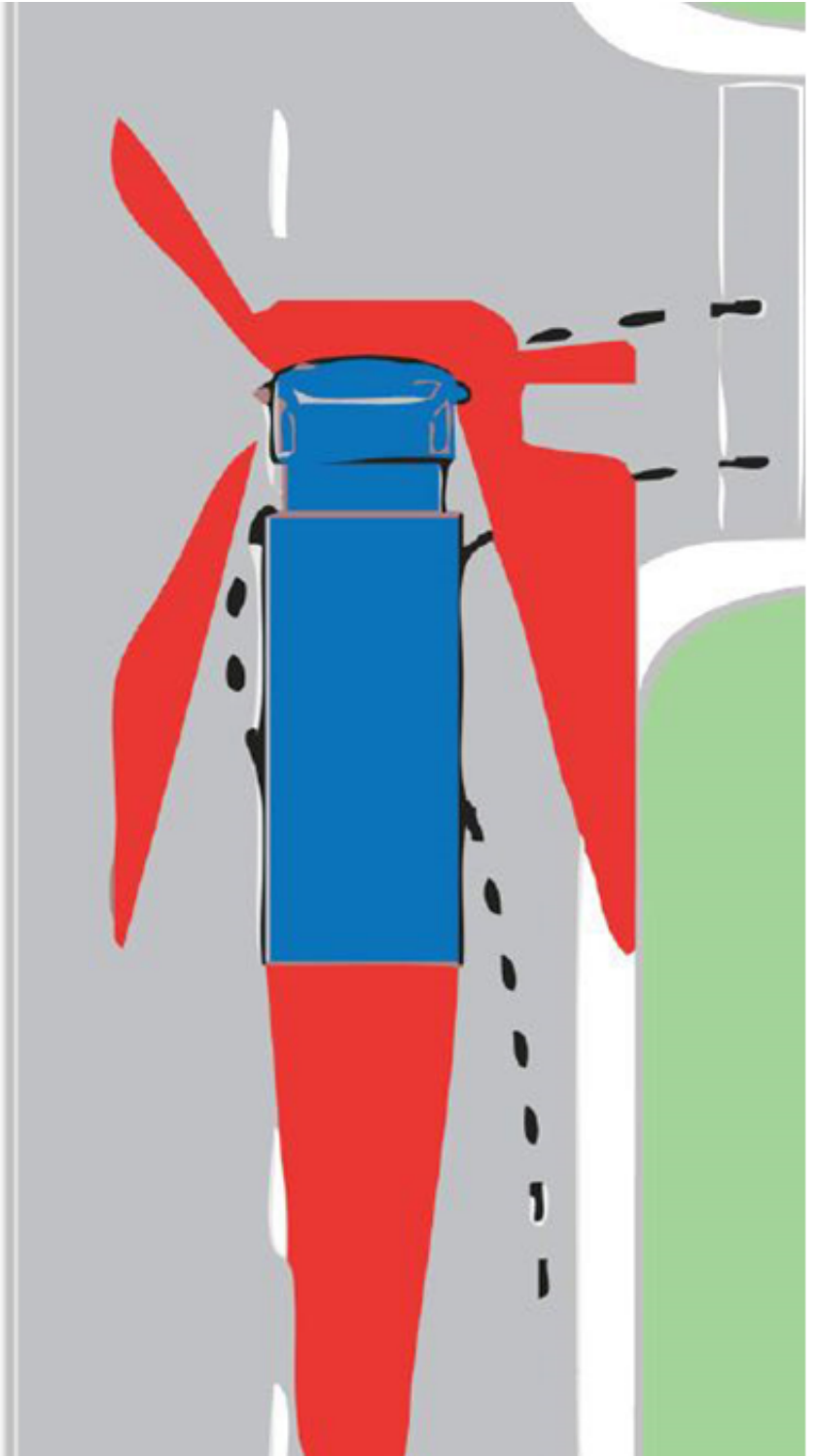
Make sure the driver sees you.

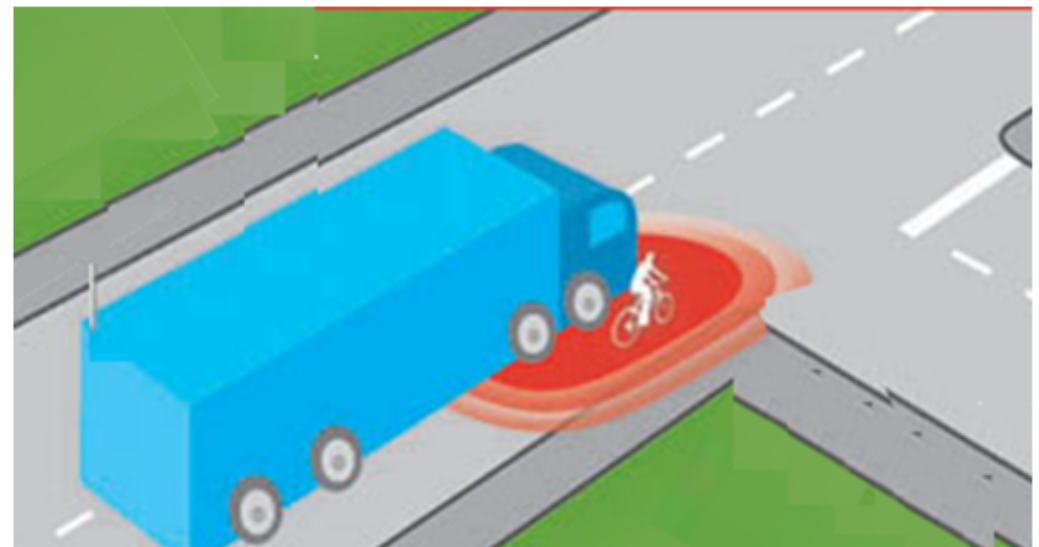


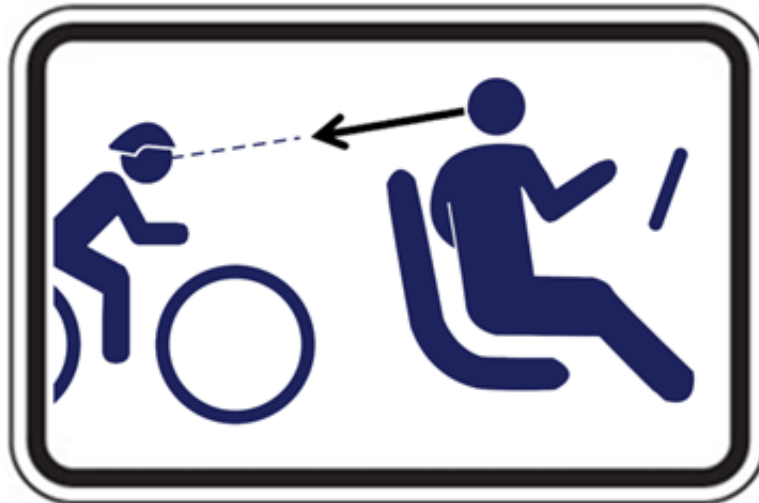
A road safety message brought to you by the members of the Ready Mixed Concrete Association of Ontario.
www.rmcao.org

STAY BACK. PASS SAFELY.











HELMET FIT TEST

EYES:
When the helmet is on properly, your child should look up and see the bottom rim of the helmet.

MOUTH:
With the helmet on, ask your child to open his or her mouth as wide as possible. The helmet should feel like it is hugging the head. If not, the straps need to be tightened.

EARS:
The helmet straps, which need to be snug but comfortable, should form a "Y" shape under each of your child's ears.



Make sure it fits!

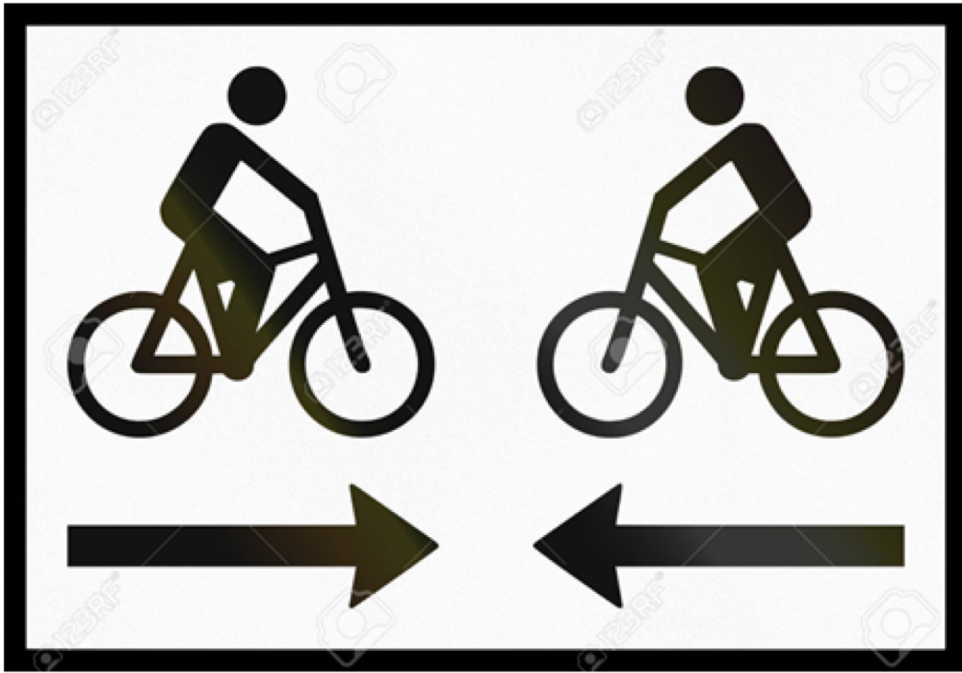
2 FINGERS ABOVE YOUR EYEBROWS

V SHAPE STRAP UNDER YOUR EARS

1 FINGER SPACE UNDER YOUR CHIN

Always wear a properly fitted, activity specific helmet





No Texting, No talking
No exceptions
while Driving

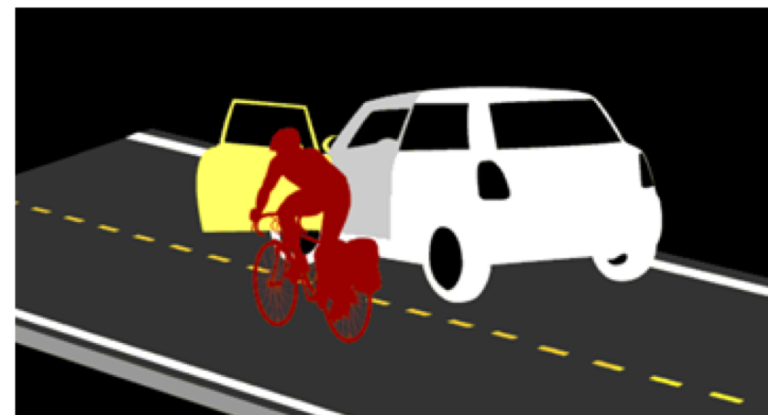
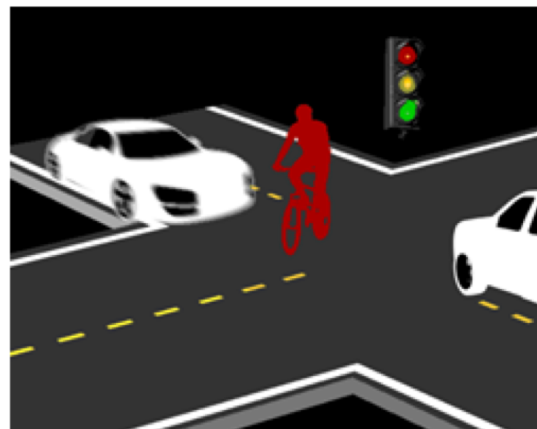


BIKING IS
THE NEW
DRIVING



BICYCLE ACCIDENT PREVENTION

AVOIDING THE 12 MOST COMMON TYPES OF BICYCLE/VEHICLE ACCIDENTS



WHEN PASSING A BICYCLIST

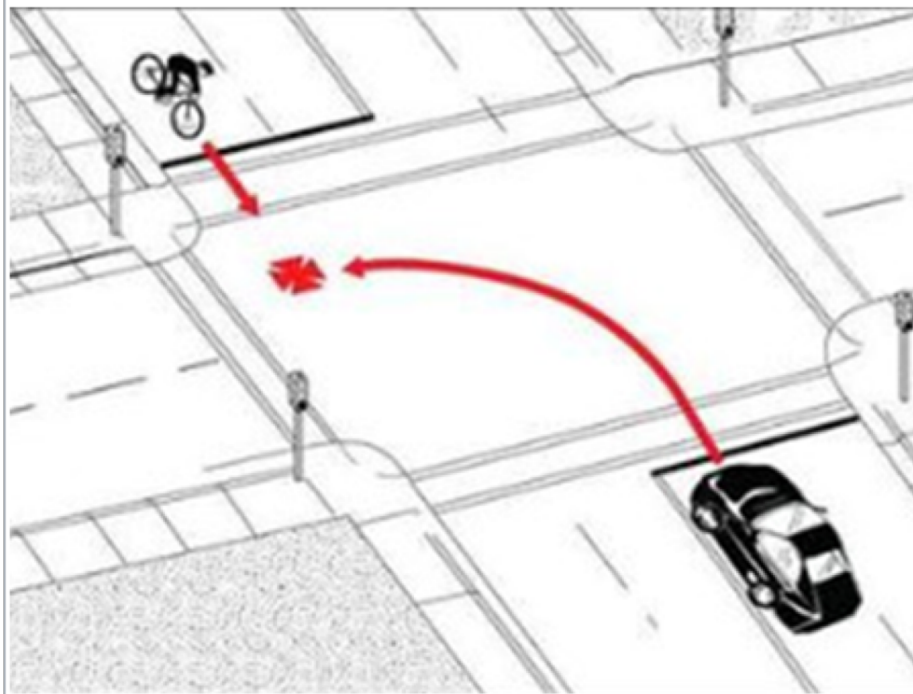
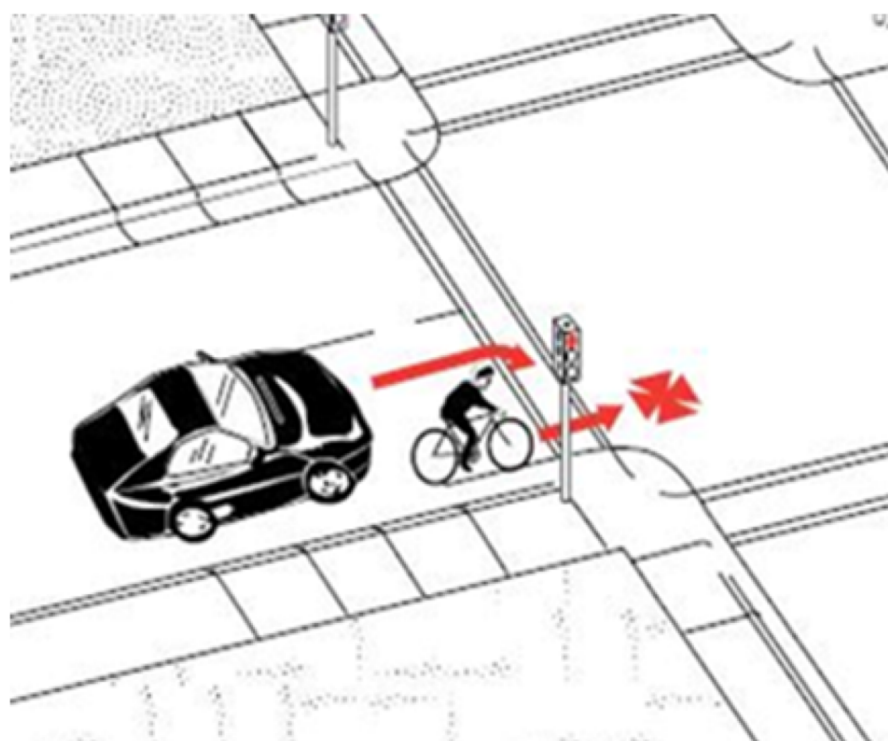
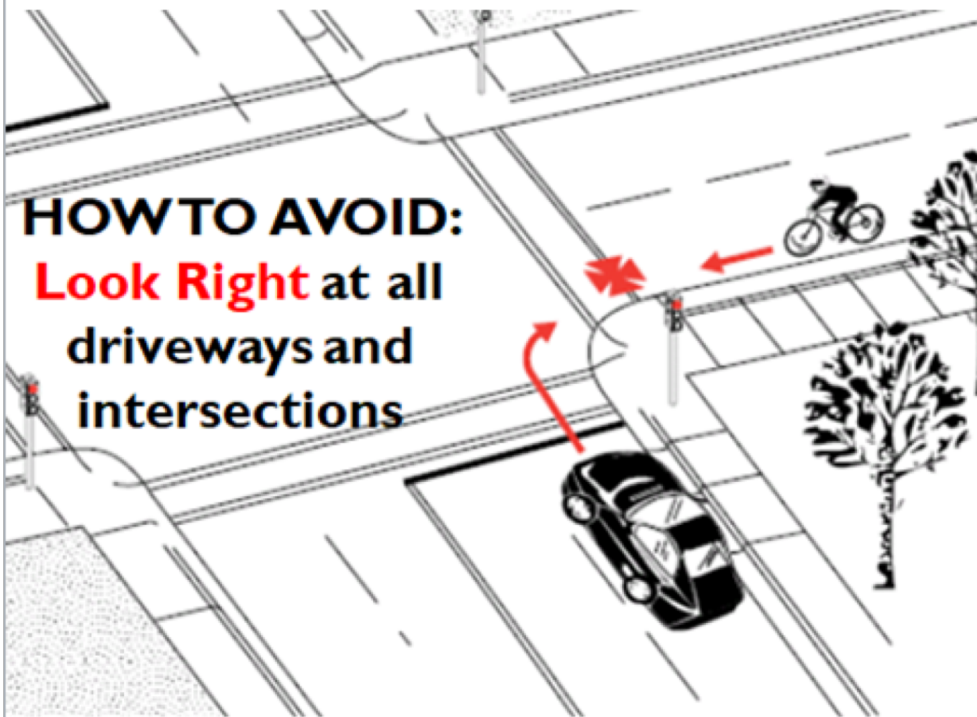
Tips for Turning
at Intersections



- ▶ Bicyclist may take the lane to **avoid being right-hooked** by cars making right hand turns
- ▶ Before turning right, check for **bicyclists approaching from behind**
- ▶ Move into the bike lane to complete a **right-hand turn**
- ▶ Avoid **overtaking** a bicyclist and **turning right**, unless it's safe to do so

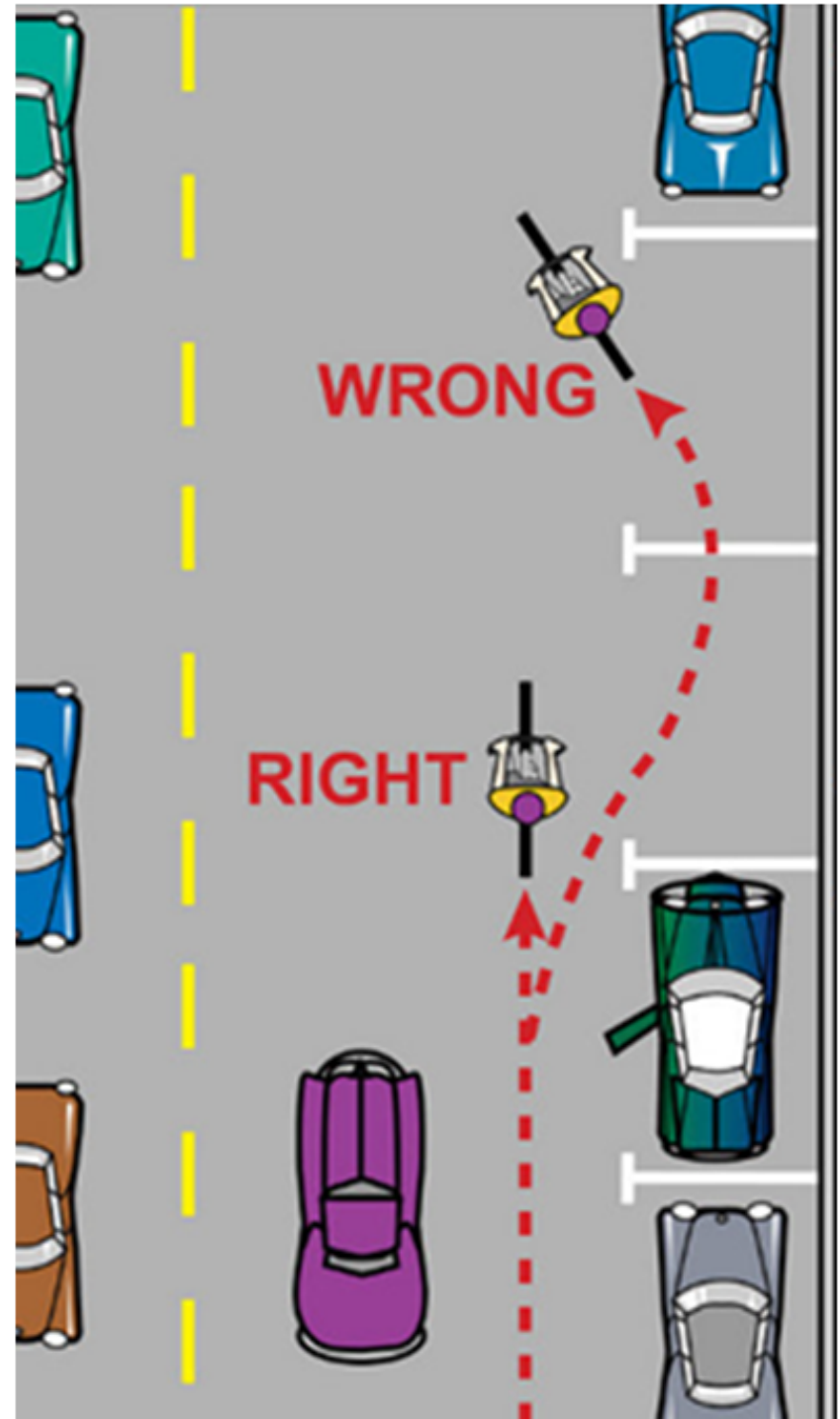
- ▶ Check for bicyclists in your **blind spots**
- ▶ When driving a larger vehicle, **allow extra room** for mirrors, extended wheel wells, trailers, etc.
- ▶ Large profile vehicles can create a **windblast**, which can knock a bicyclist off the road
- ▶ Passing a **group of riders**
 - ▶ Long single file line or a large pack (peloton)
 - ▶ Allow 3' - pass only when clear
- ▶ Tap the **horn** and **avoid blasting it** as this can surprise a bicyclist and lead to a crash

HOW TO AVOID:
Look Right at all
driveways and
intersections



TEACH CYCLISTS

- ▶ Control or “take the lane” when appropriate
- ▶ Be visible and predictable
- ▶ Ride on the right
- ▶ Stop at all stop signs and lights
- ▶ Obey first-come, first-served rule at intersections
- ▶ Yield when changing lanes
- ▶ Choose correct intersection positioning



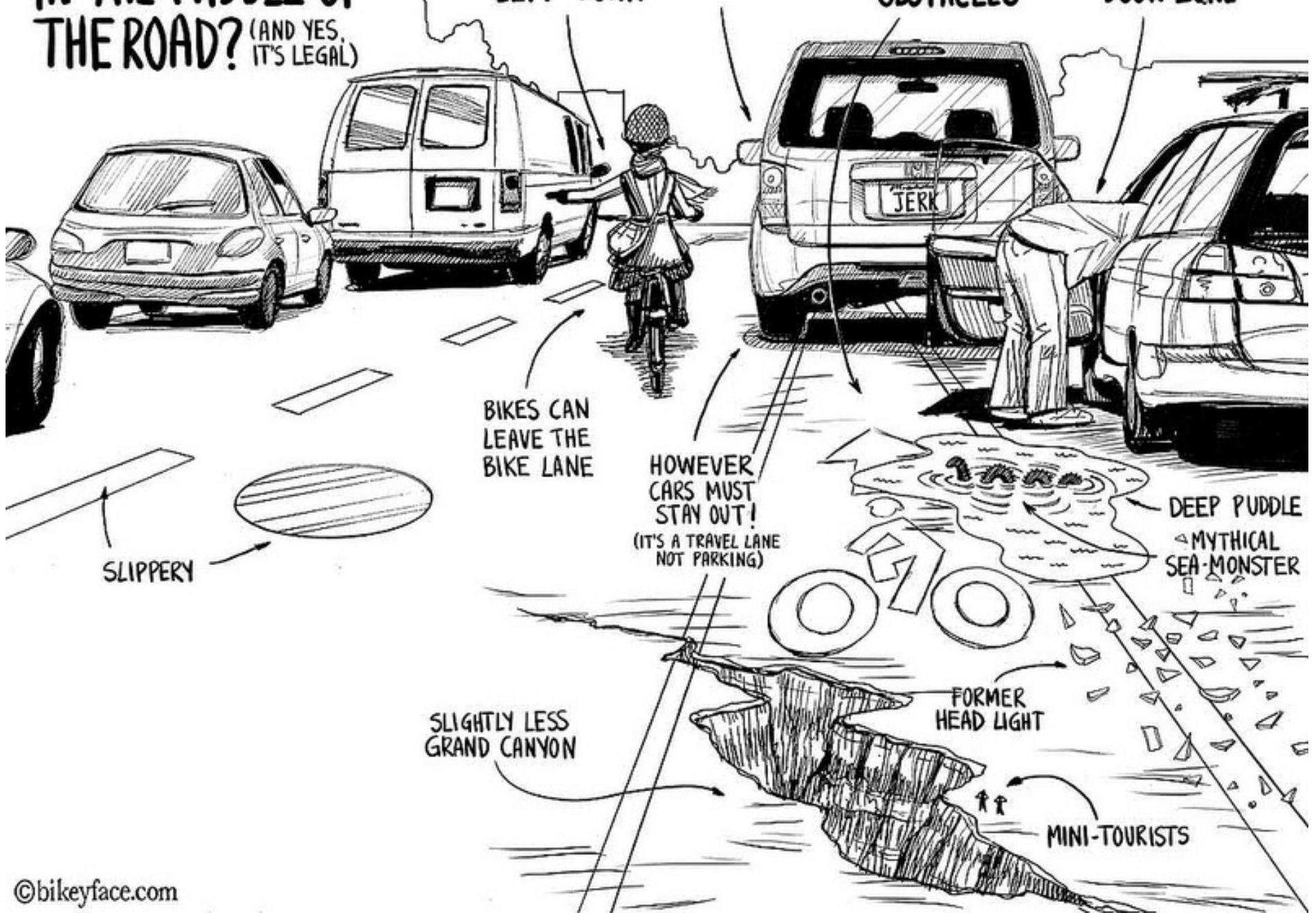
WHY IS THAT BIKE IN THE MIDDLE OF THE ROAD? (AND YES, IT'S LEGAL)

MAKING A LEFT TURN

PASSING

AVOIDING OBSTACLES

AVOIDING THE "DOOR ZONE"



BIKES CAN LEAVE THE BIKE LANE

HOWEVER CARS MUST STAY OUT!
(IT'S A TRAVEL LANE NOT PARKING)

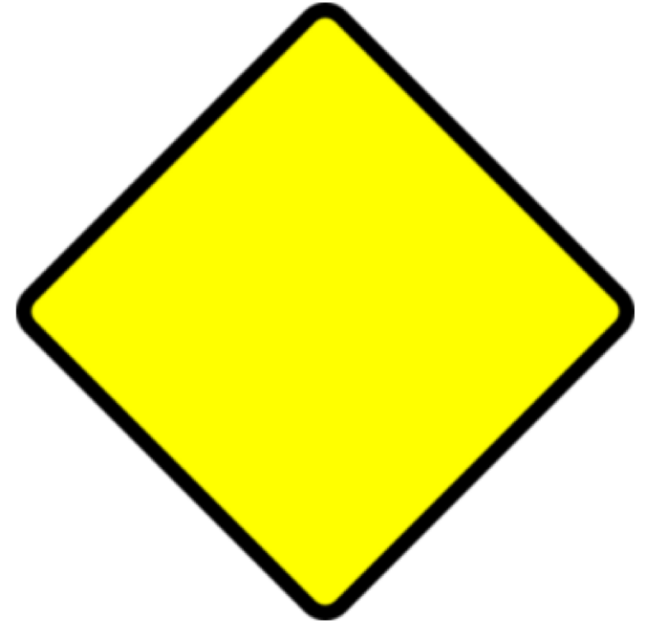
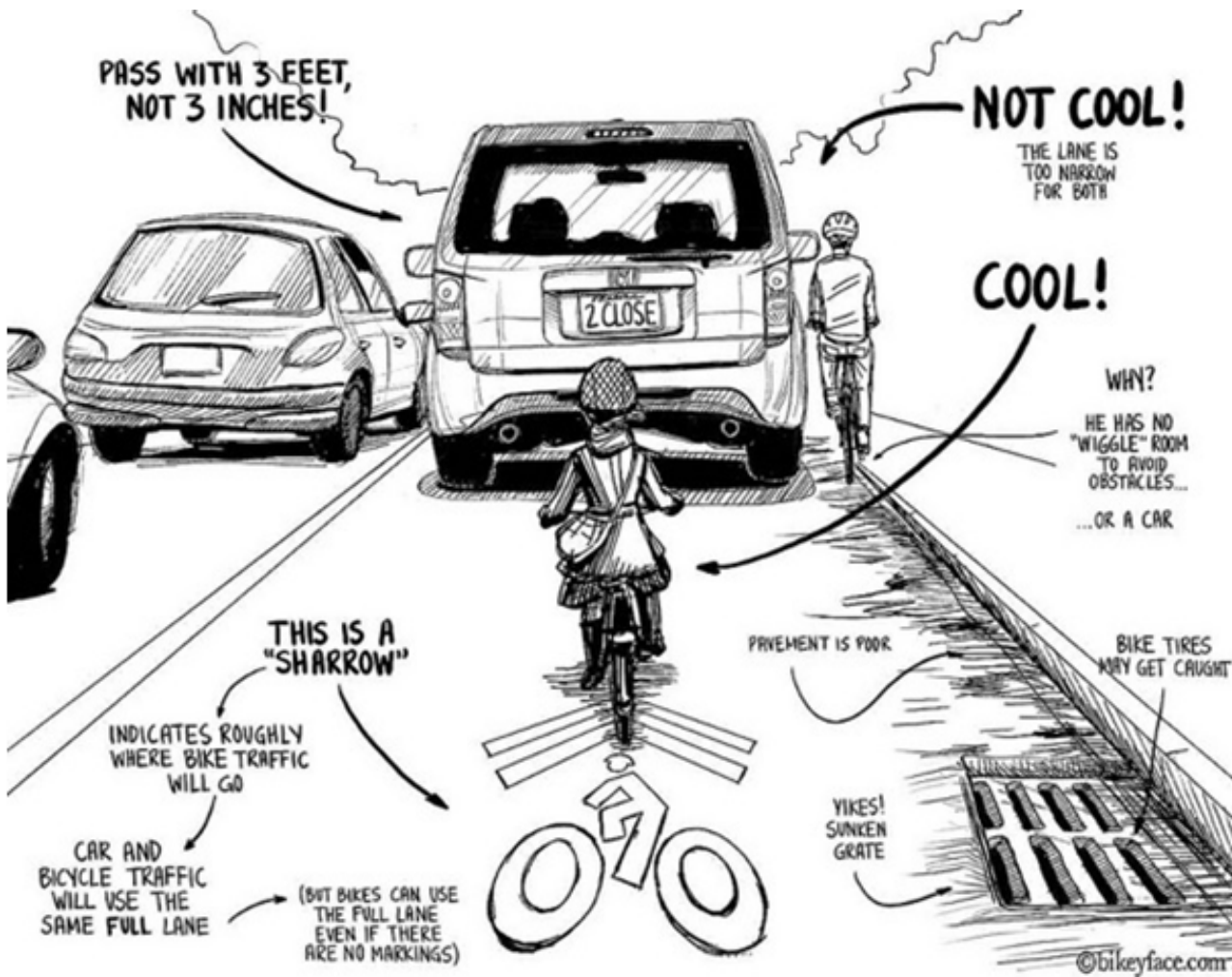
DEEP PUDDLE
MYTHICAL SEA-MONSTER

SLIPPERY

SLIGHTLY LESS GRAND CANYON

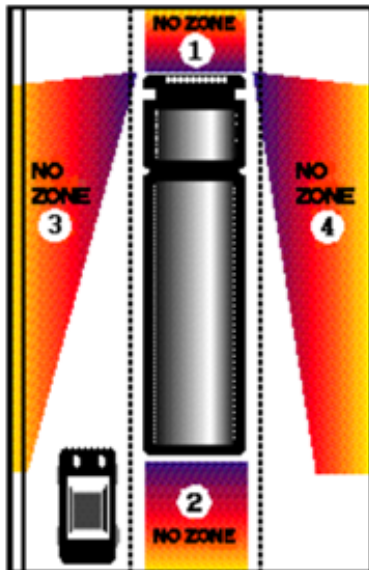
FORMER HEAD LIGHT

MINI-TOURISTS



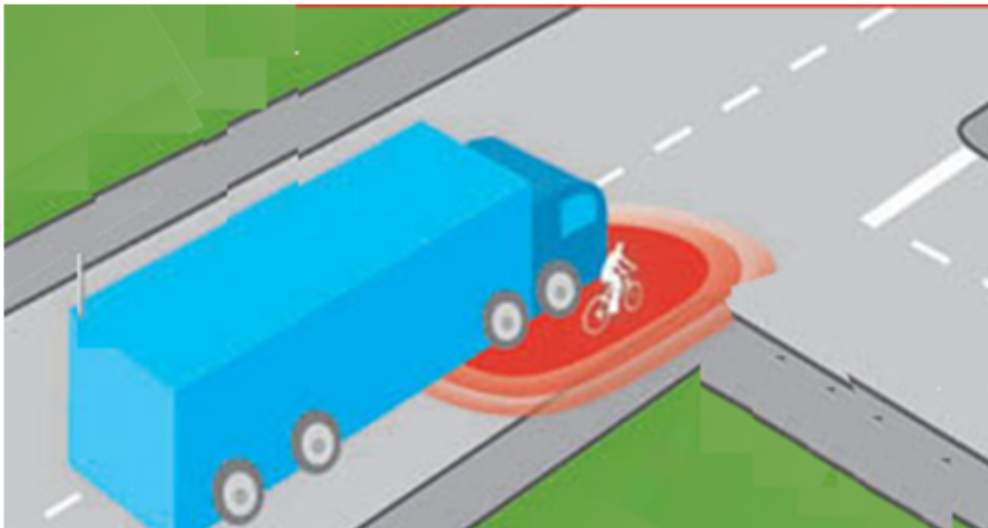


WHEN SHARING THE ROAD WITH TRUCKS, AVOID THESE FOUR BLIND SPOTS:



- 1 Don't return to the driving lane until you can see the entire front of the truck in your rear view mirror.
- 2 If you can't see one of the truck driver's side mirrors, he or she can't see you.
- 3 If you can't see the truck driver in his or her side mirror, he or she can't see you.
- 4 Don't enter the area between the curb or shoulder and the truck if the truck is signaling a turn.









CAUTION!



PLEASE PASS WITH CARE



DRIVER

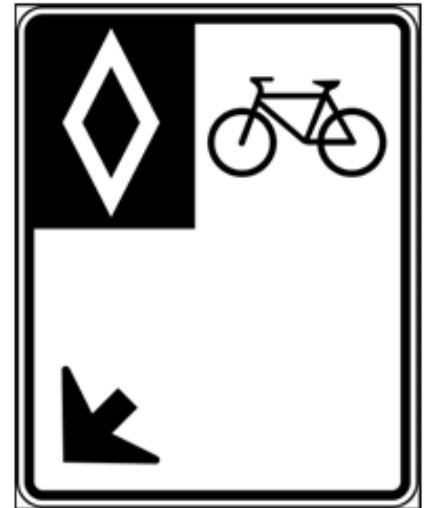


VEHICLE

Same Rights | Same Rules

I am traffic...





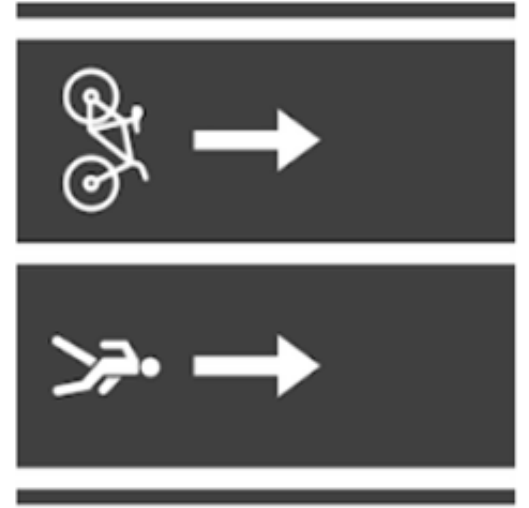














Fig. A
Bicycle Symbol



Fig. B
Bicycle Rider
with Helmet



Fig. C
Bicycle Trail



Fig. D
Bicycle in Arrow



Fig. E
Bicycle
Loop Detector



Fig. F
Shared Lane
Symbol



Fig. G
Word Symbols

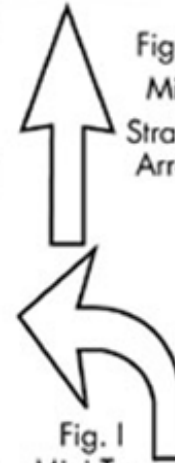


Fig. H
Mini
Straight
Arrow



Fig. J
Mini Combi
Arrow



Fig. K
Pedestrian
Symbol



dwgmodels.com



dwgr.



models.com







DIY Sign Making

One can draft new signage with Power Point (PPT) & Snipping Tool (ST) on Windows.

Photoshop is useful to make silhouettes & masks which make the background transparent. Such layered images with transparent backgrounds is also available with Illustrator or other graphics programs.

With ST, crop & copy images, clip art, etc. & paste into Power Point as PNGs which are (small) vector files which enlarge or shrink with little loss.

Use Shapes in PPT & copy & paste editing with ST – selecting details, shapes, color, B or W patches to doctor & build your image. Make successive PNGs of work in progress & save PPT often, preserving stages of the image in case you need to back track.

Consider overlaying model images with black shapes or parts of existing pictograms to make needed new signage. See examples below

MAKING MASKS OR SILHOUETTE LAYERS

Photoshop enables you to make silhouettes, layers and masks. The “Magic Wand” tool lets you select out sharp edged images. You can then Edit>Cut” out selected sections or their inverse & replace it with a transparent layer (which appears as a pale checkerboard fill). Sometimes you will need to edit using PPT or PS tricks to “free”, patch or doctor the part you want for silhouette mask and use.

Using PS’ Images> Adjustments >Hue & Saturation you can turn the remaining image solid black and save as a PNG. The silhouette / mask then may be superimposed over another image.

Use Help or Google to find tutorials.







Use Ppt Shape using stars, triangles to make crash. Use Ppt to silhouette & make mask

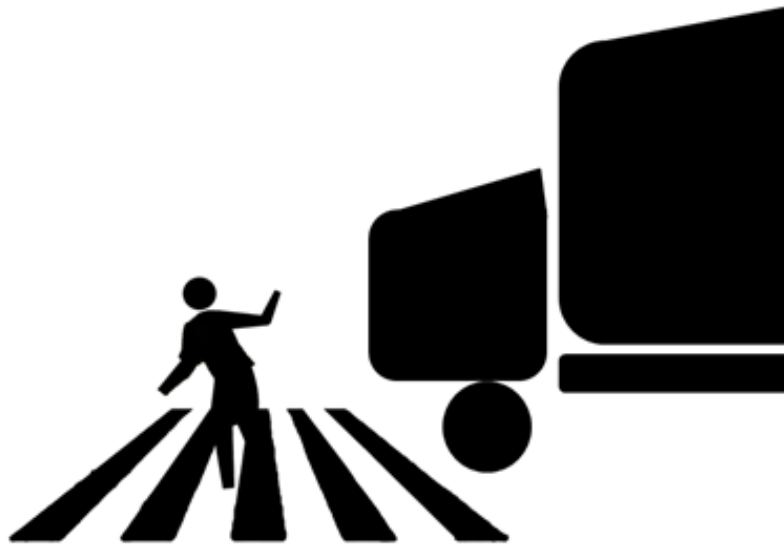
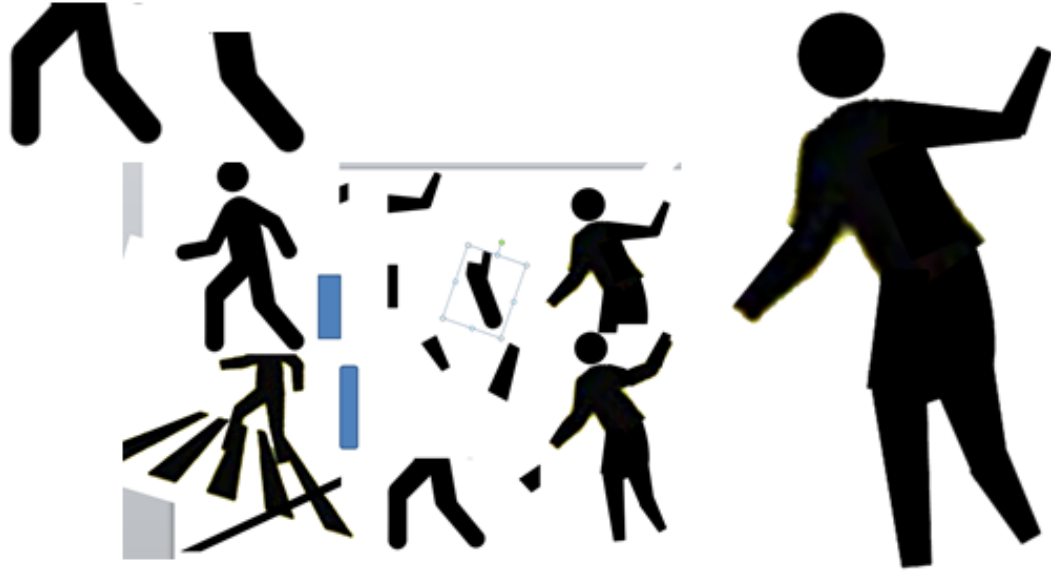


Photoshop silhouette mask



Photoshop silhouette mask







Masks!



No Mask!

Your feedback – and sharing - of
found or newly created cycling safety
signs is welcomed!